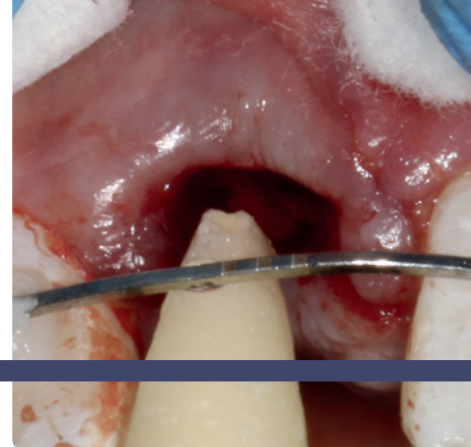


Contents



Foreword viii

Preface ix

About the companion website x

- 1** Risk factors for dental trauma 2
- 2** Prevention of dental trauma 4
- 3** Essential armamentarium 6
- 4** Examination of dental trauma 8
- 5** Infraction 10
- 6** Enamel fracture 12
- 7** Enamel–dentine fracture 14
- 8** Enamel–dentine–pulp fracture 16
- 9** Crown–root fracture 18
- 10** Crown–root fracture with pulp involvement 20
- 11** Root fracture 22
- 12** Alveolar process fracture 24
- 13** Concussion 26
- 14** Subluxation 28
- 15** Extrusive luxation 30
- 16** Intrusive luxation 32
- 17** Lateral luxation 34
- 18** Features of luxation injuries and principles of repositioning 36
- 19** Avulsion of a tooth with a closed apex 38
- 20** Principles of splinting 40
- 21** Post-operative instructions 42
- 22** Follow-up and splint removal 44
- 23** Indications for endodontic treatment 46
- 24** Sclerosis 48
- 25** Discolouration 50
- 26** Management of the immature root 52
- 27** Root resorption – external replacement 54
- 28** Root resorption – external cervical 56
- 29** Root resorption – internal inflammatory 58
- 30** Tooth replacement options 60
- 31** Autotransplantation 62
- 32** The role of orthodontics 64

Appendix A: *Splinting times and follow up intervals for fracture and displacement injuries in the adult dentition* 66

Appendix B: *Management of dental trauma in the primary dentition* 68

References 70

Index 74